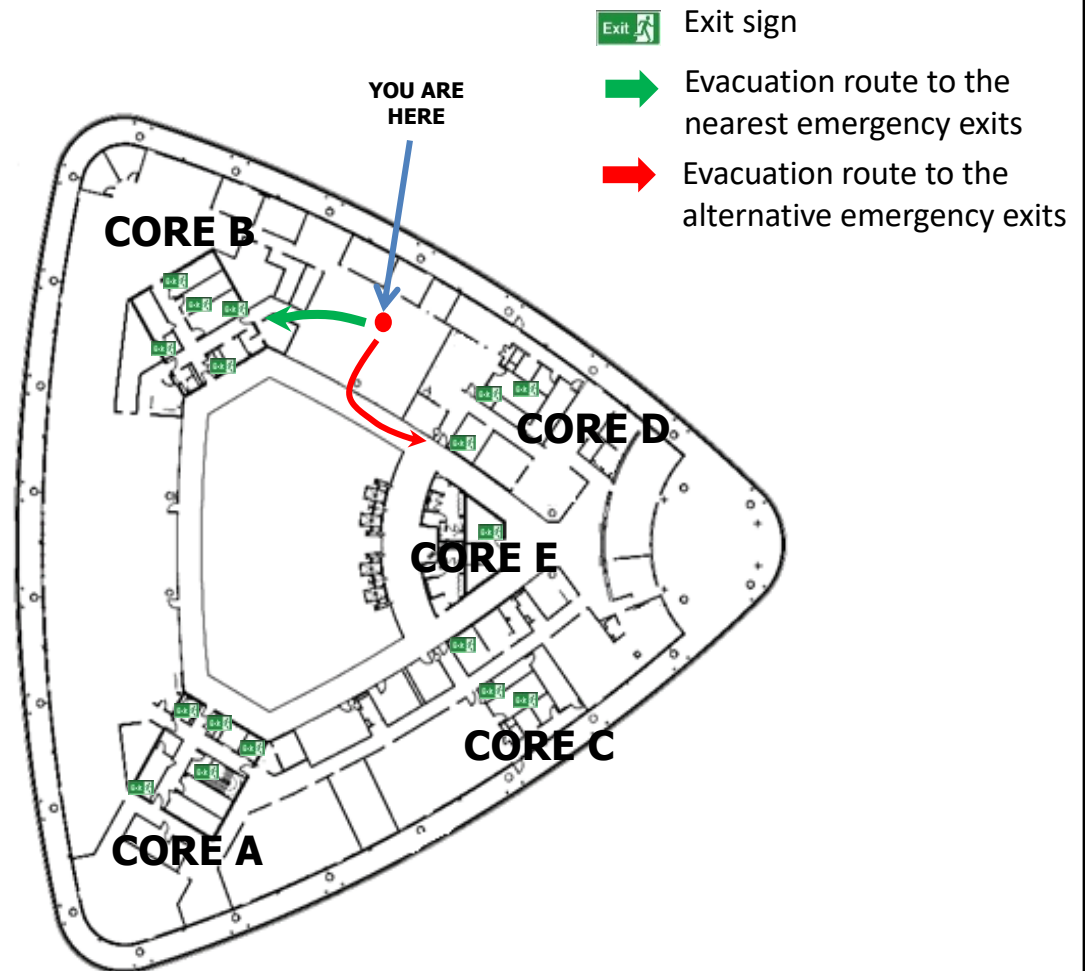


# In Case of Emergency

## Evacuation Route

### (Office Area Core B – D, Level 5)



#### **EVACUATION**

- Upon hearing the fire alarm, wait for further instructions before commencing to leave the building.
- Once the instruction is given for evacuation, collect only essential items.
- Do not use the lifts. Proceed to the nearest exit and make your way down to the Ground Floor exits.
- If the nearest exit is inaccessible, then move to the other alternative exits.
- Make your way to the emergency assembly area located at the open carpark of the National Science Centre.

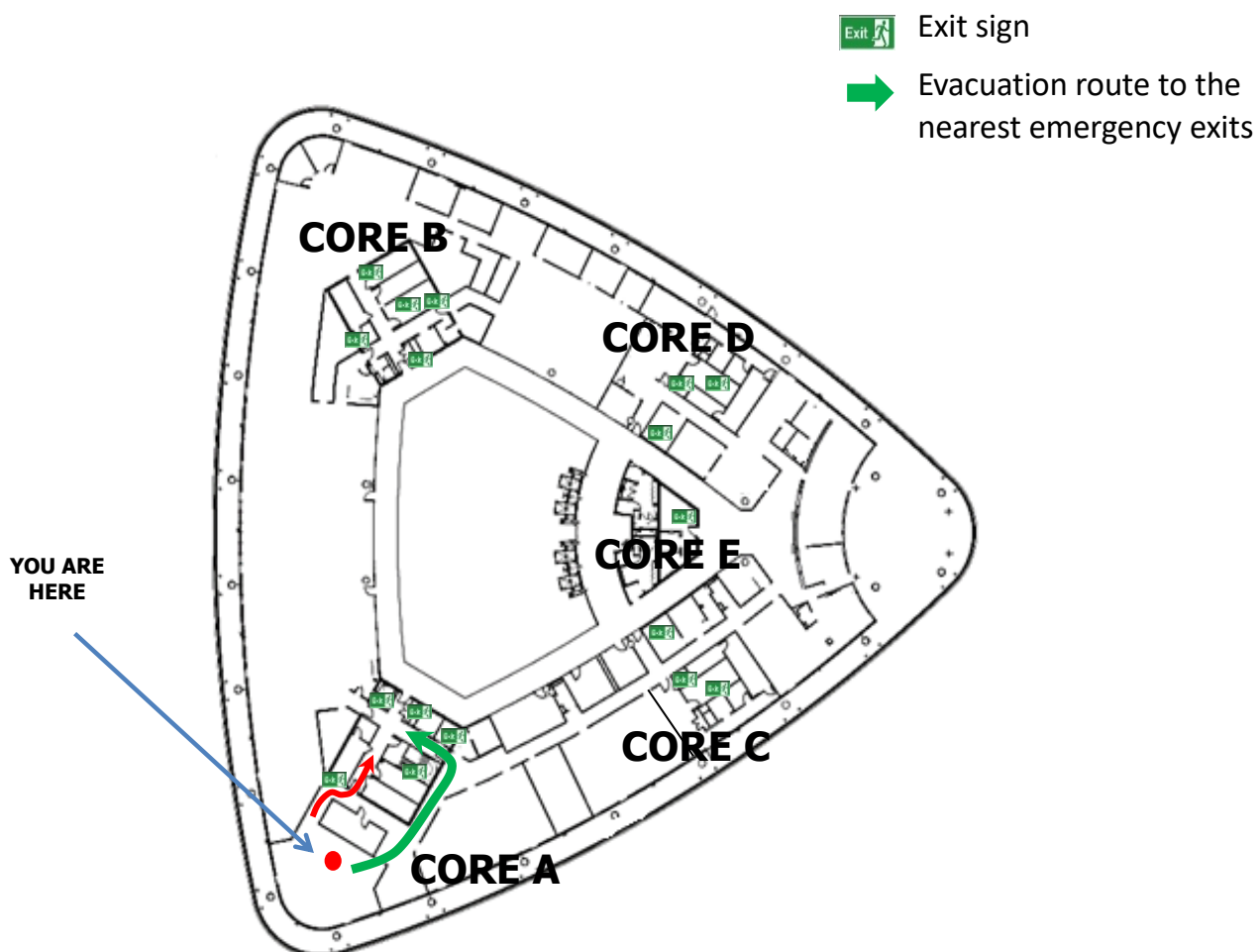
#### **ALERT**

- If you notice any incident that may threaten yours and your colleagues' well-being, please call the SC Hotline immediately at 03-62048886/8887.
- Remain calm, state your full name and location, describe the emergency, and follow the instructions from the SC Hotline.

# In Case of Emergency

## Evacuation Route

### (Executive Dining Room, Core A, Level 5)



#### EVACUATION

- Upon hearing the fire alarm, wait for further instructions before commencing to leave the building.
- Once the instruction is given for evacuation, collect only essential items.
- Do not use the lifts. Proceed to the nearest exit and make your way down to the Ground Floor exits.
- If the nearest exit is inaccessible, then move to the other alternative exits.
- Make your way to the emergency assembly area located at the open carpark of the National Science Centre.

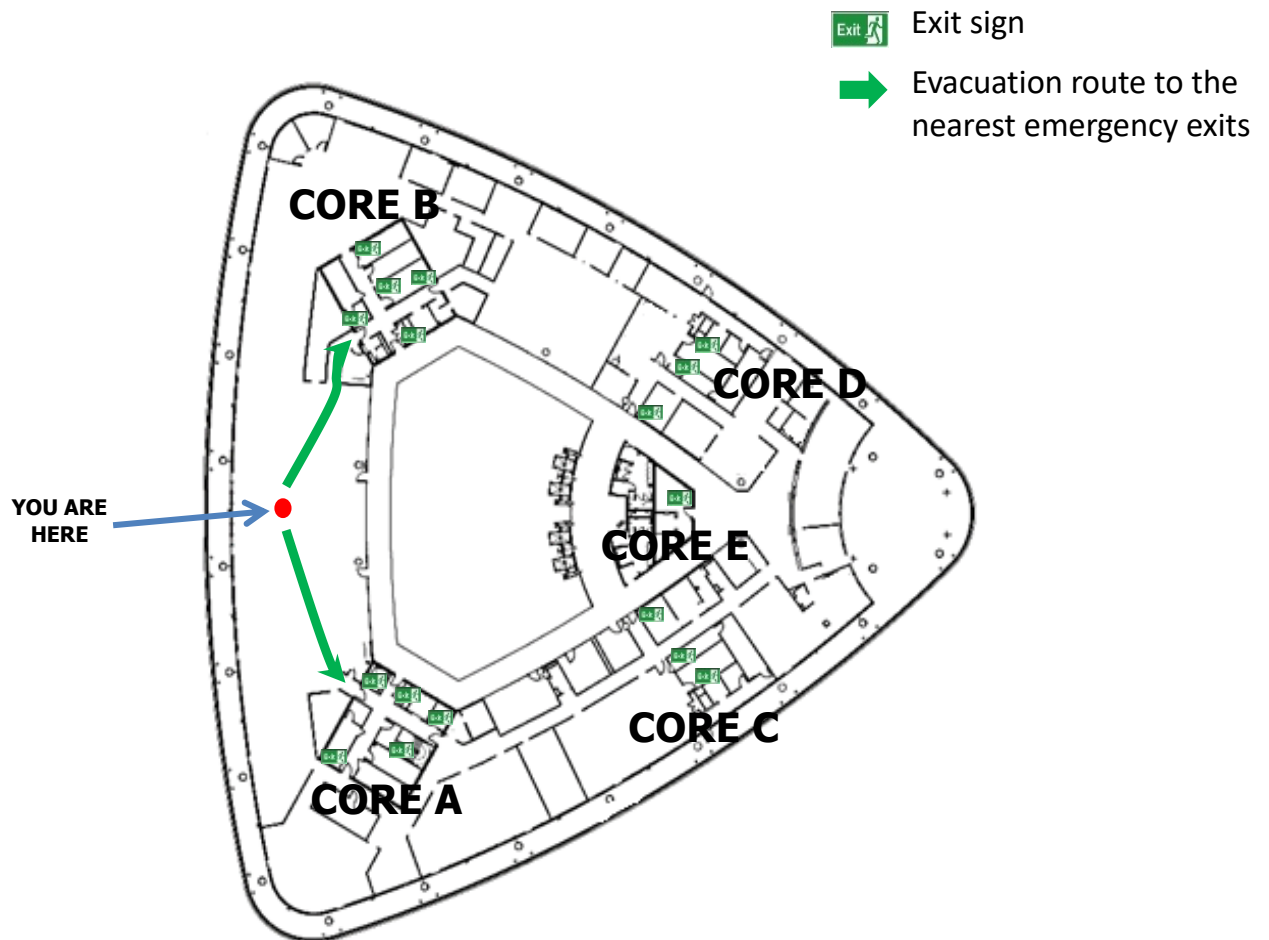
#### ALERT

- If you notice any incident that may threaten yours and your colleagues' well-being, please call the SC Hotline immediately at 03-62048886/8887.
- Remain calm, state your full name and location, describe the emergency, and follow the instructions from the SC Hotline.

# In Case of Emergency

## Evacuation Route

### (Office Area Core A – B, Level 5)



#### **EVACUATION**

- Upon hearing the fire alarm, wait for further instructions before commencing to leave the building.
- Once the instruction is given for evacuation, collect only essential items.
- Do not use the lifts. Proceed to the nearest exit and make your way down to the Ground Floor exits.
- If the nearest exit is inaccessible, then move to the other alternative exits.
- Make your way to the emergency assembly area located at the open carpark of the National Science Centre.

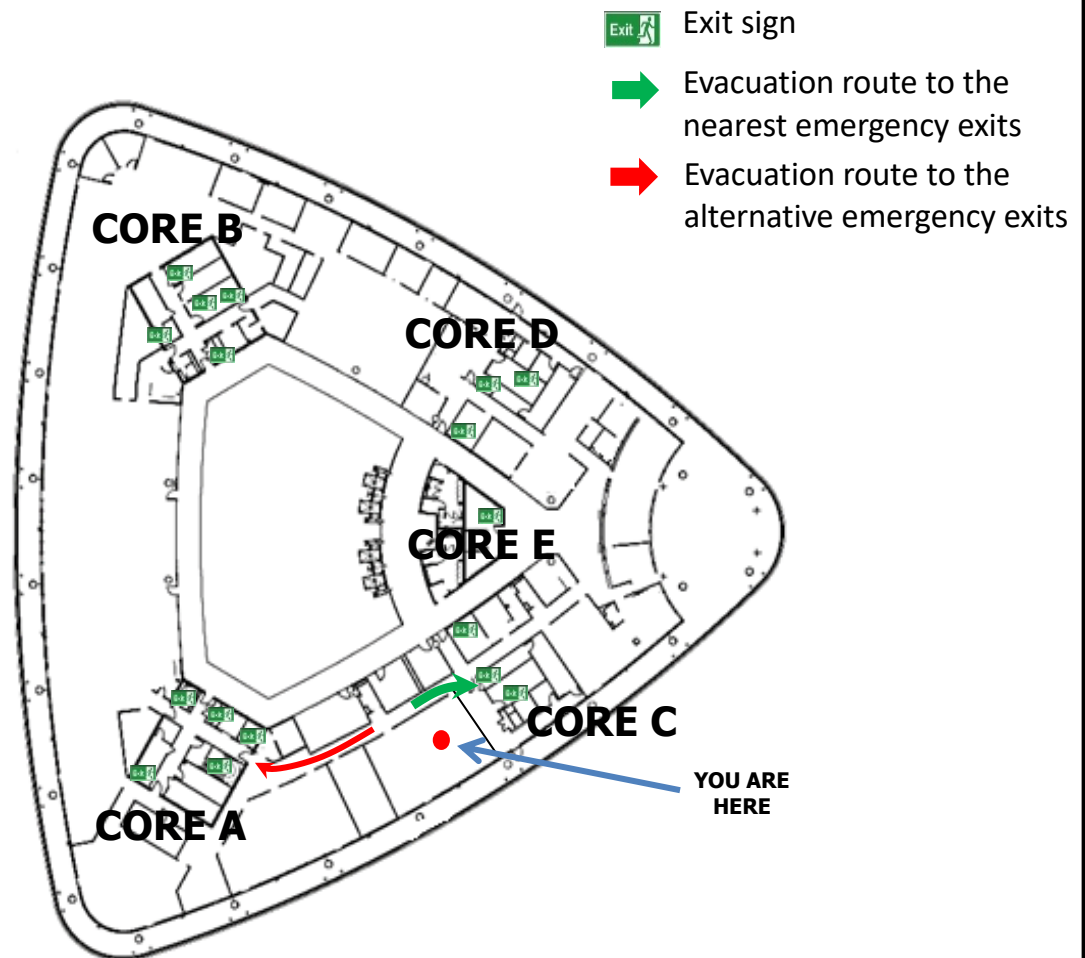
#### **ALERT**

- If you notice any incident that may threaten yours and your colleagues' well-being, please call the SC Hotline immediately at 03-62048886/8887.
- Remain calm, state your full name and location, describe the emergency, and follow the instructions from the SC Hotline.

# In Case of Emergency

## Evacuation Route

### (Board Room, Core C, Level 5)



#### EVACUATION

- Upon hearing the fire alarm, wait for further instructions before commencing to leave the building.
- Once the instruction is given for evacuation, collect only essential items.
- Do not use the lifts. Proceed to the nearest exit and make your way down to the Ground Floor exits.
- If the nearest exit is inaccessible, then move to the other alternative exits.
- Make your way to the emergency assembly area located at the open carpark of the National Science Centre.

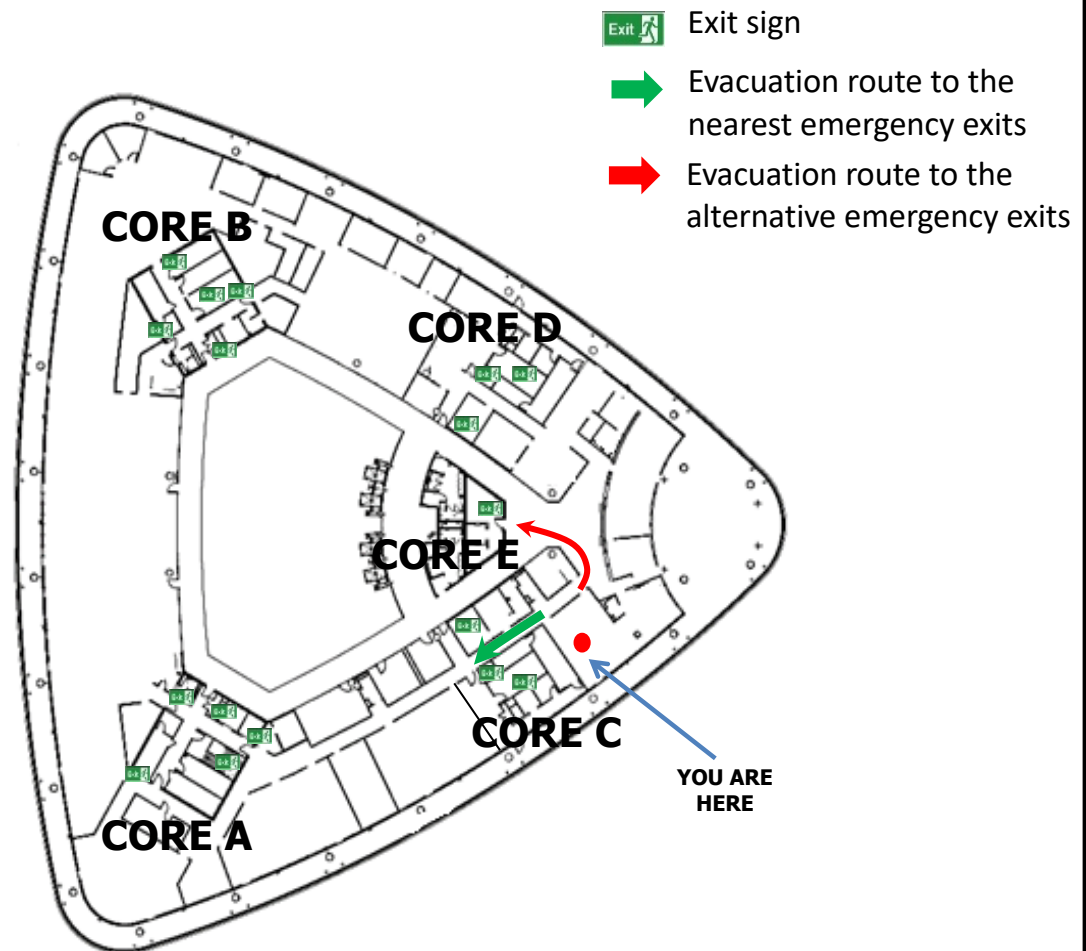
#### ALERT

- If you notice any incident that may threaten yours and your colleagues' well-being, please call the SC Hotline immediately at 03-62048886/8887.
- Remain calm, state your full name and location, describe the emergency, and follow the instructions from the SC Hotline.

# In Case of Emergency

## Evacuation Route

### (Conference Room, Core C, Level 5)



#### EVACUATION

- Upon hearing the fire alarm, wait for further instructions before commencing to leave the building.
- Once the instruction is given for evacuation, collect only essential items.
- Do not use the lifts. Proceed to the nearest exit and make your way down to the Ground Floor exits.
- If the nearest exit is inaccessible, then move to the other alternative exits.
- Make your way to the emergency assembly area located at the open carpark of the National Science Centre.

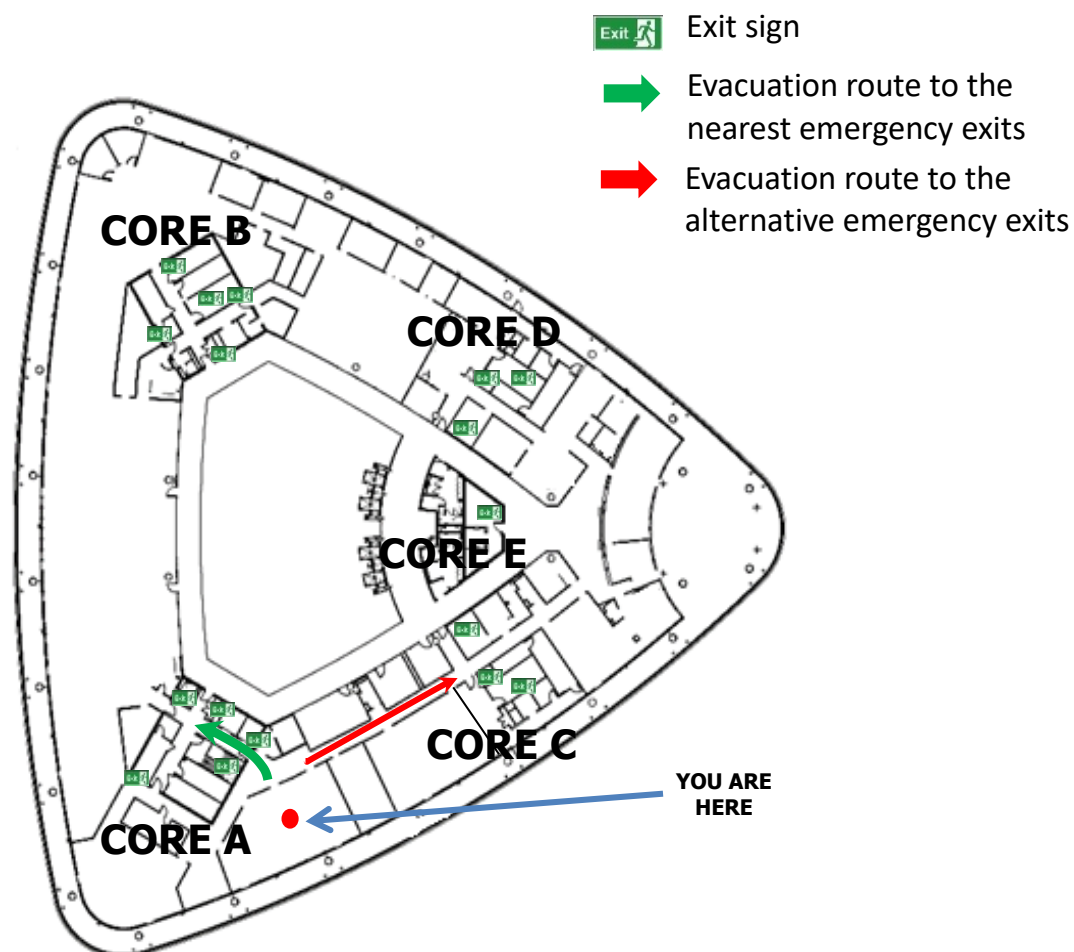
#### ALERT

- If you notice any incident that may threaten yours and your colleagues' well-being, please call the SC Hotline immediately at 03-62048886/8887.
- Remain calm, state your full name and location, describe the emergency, and follow the instructions from the SC Hotline.

# In Case of Emergency

## Evacuation Route

### (Brain Storming Room, Core A, Level 5)



#### EVACUATION

- Upon hearing the fire alarm, wait for further instructions before commencing to leave the building.
- Once the instruction is given for evacuation, collect only essential items.
- Do not use the lifts. Proceed to the nearest exit and make your way down to the Ground Floor exits.
- If the nearest exit is inaccessible, then move to the other alternative exits.
- Make your way to the emergency assembly area located at the open carpark of the National Science Centre.

#### ALERT

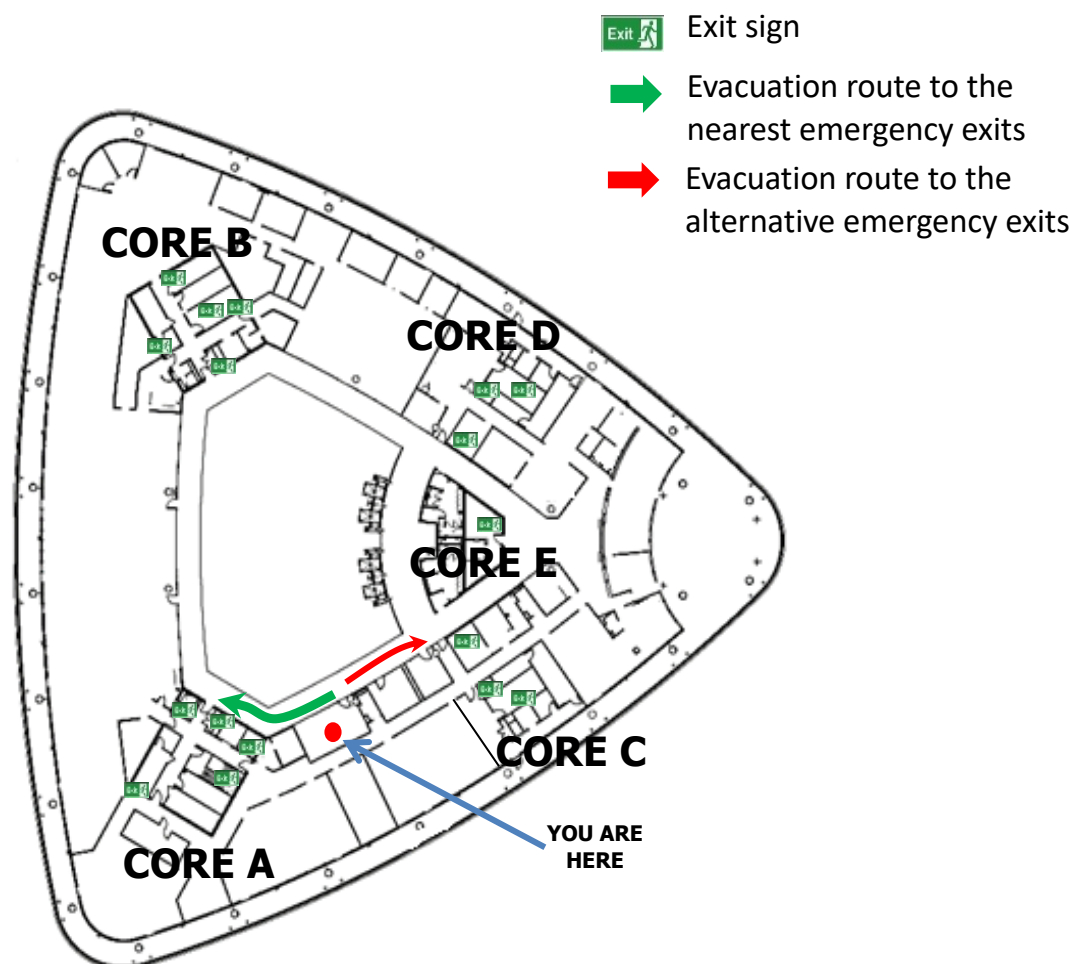
- If you notice any incident that may threaten yours and your colleagues' well-being, please call the SC Hotline immediately at 03-62048886/8887.
- Remain calm, state your full name and location, describe the emergency, and follow the instructions from the SC Hotline.



# In Case of Emergency

## Evacuation Route

### (Meeting Room 1 and 2, Level 5)



#### EVACUATION

- Upon hearing the fire alarm, wait for further instructions before commencing to leave the building.
- Once the instruction is given for evacuation, collect only essential items.
- Do not use the lifts. Proceed to the nearest exit and make your way down to the Ground Floor exits.
- If the nearest exit is inaccessible, then move to the other alternative exits.
- Make your way to the emergency assembly area located at the open carpark of the National Science Centre.

#### ALERT

- If you notice any incident that may threaten yours and your colleagues' well-being, please call the SC Hotline immediately at 03-62048886/8887.
- Remain calm, state your full name and location, describe the emergency, and follow the instructions from the SC Hotline.